



NEWPORT  
RHODE ISLAND  
1639

---

# CSO Program Stakeholder Workgroup: Meeting #7a System Master Plan Control Options (continued)

---

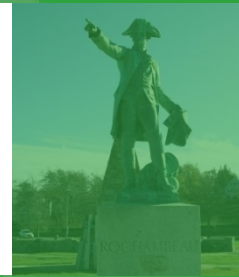
City Hall – Council Chambers  
August 14, 2012





NEWPORT  
RHODE ISLAND

1639

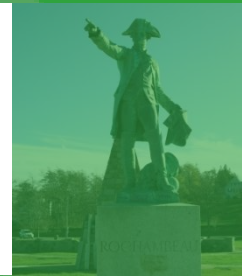


# STAKEHOLDER COMMENTS AND QUESTIONS



NEWPORT  
RHODE ISLAND

1639



# REGULATORY FRAMEWORK

# Regulatory Documents that Outline CSO Planning Requirements and Strategies

## Clean Water Act

- Meet water quality standards
- Support designated uses

From Stakeholders Meeting #6  
February 9, 2012

## EPA CSO Policy

- Eliminate or relocate CSO discharges to “sensitive use” waters
- “Equivalent primary treatment” is allowable for CSO discharges
- Maximizing flow to the WPCP is a required

## Consent Decree

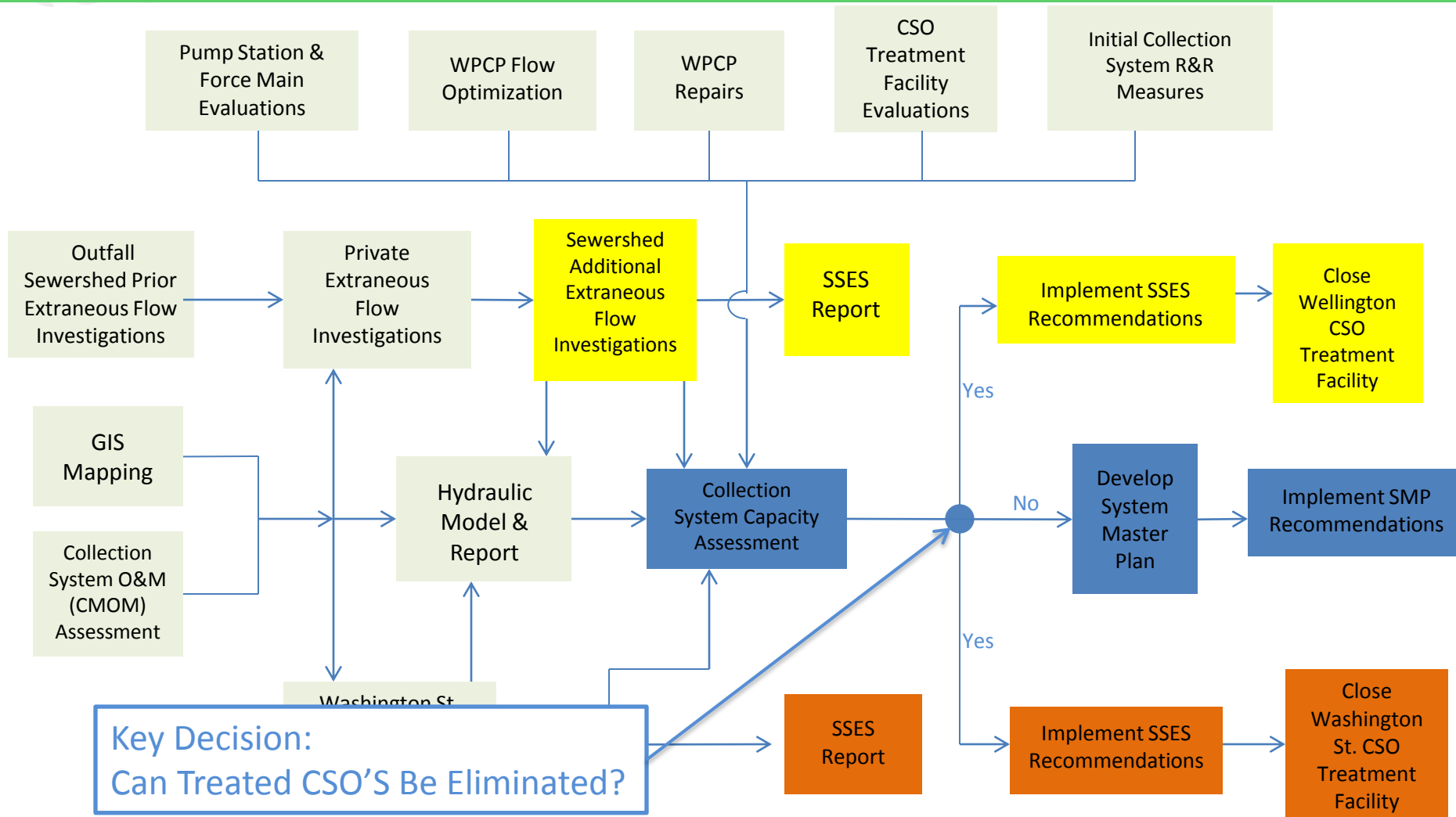
- Dictates the deliverables and schedule of activities for the City of Newport to meet its regulatory requirements

# Regulatory Framework for Evaluating System Improvements

Consent Decree Item #65

*If the City determines that its proposed Collection System replacement and rehabilitation measures, its public infiltration/inflow, private rainfall induces infiltration and inflow removal programs, and its WPCP flow optimization will not result in the elimination of overflows, including the Wellington Avenue and Washington Street Outfalls, then the Capacity Assessment shall include an identification and evaluation of additional measures.....*

# Decision Framework from Newport's Consent Decree



# Overview of System Behaviors and Control Technologies

## Step 1 – Collection System Capacity Assessment (CSCA) Report

### Infiltration/Inflow Reduction

- Control technologies for I/I reduction
- Model results for I/I reduction

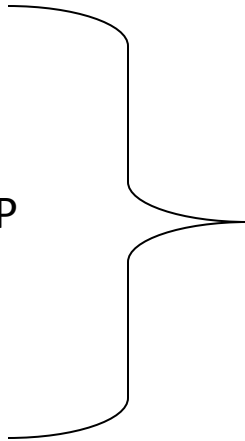
### Conveyance System and Plant Improvements

- Overview of current characteristics
- Control technologies for optimization of the existing system
- Model results for conveyance and plant optimization

## Step 2 – System Master Plan (SMP)

### CSO Control Projects

- New conveyance facilities
- Improvements to existing CSO treatment
- Increasing the design capacity of the WPCP
- In-line and/or Offline Storage
- Green technologies

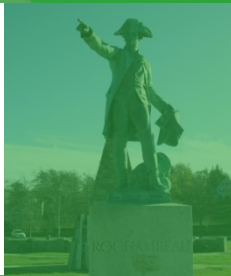


The SMP applies if wet weather discharges cannot be eliminated cost effectively with CSCA technologies



NEWPORT  
RHODE ISLAND

1639



# EVALUATION OF SCENARIOS



# CSO Program Goals

*Continue to identify & implement the most cost-effective solution for reducing the number of CSOs to a level protective of Newport Harbor and acceptable to the community and regulatory agencies.*

# Strategy to Achieve the Goals of the CSO Program

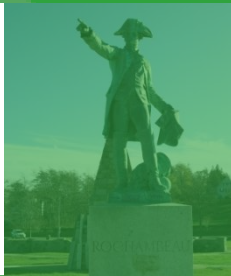
1. Comply with EPA and RIDEM negotiated CAP requirements
2. Achieve reasonable application of water quality standards
  - Protect King Park Beach
  - Determine the best use of the Washington St. CSO Facility
3. Maximize use of existing facilities
4. Prioritize capital repair & replacement projects
  - Invest in sewerage system for next generations
5. Control Operations & Maintenance (O&M) requirements - (minimize need for new capital facilities)
6. Identify a program & an implementation schedule that is affordable to Newport customers





NEWPORT  
RHODE ISLAND

1639



NEXT MEETING

# Summary of Selected Alternatives

Evaluation Criteria	Weight	SCENARIO							
		BL		?		?		?	
		Rating	Score	Rating	Score	Rating	Score	Rating	Score
Cost/ Affordability									
Water Quality Benefits									
Social Impacts									
Regulatory Compliance									
Engineering/ Flexibility									
<b>Total Score</b>									

Evaluate criteria weight and rating from 0-10, with 10 being best meets priority criteria and 0 being least meets priority criteria.

# Next Steps for the SMP

- Refine alternatives
  - Mix of controls
  - Facility sizes
  - Run a typical year
  - Recalculate loads
- Prepare Implementation Plan
  - Strategies for implementation
  - Schedule for construction
  - Recalculate rate impacts

# Next Meeting

**Topic: System Master Plan Draft**

- Recommended Controls
- Program Costs
- Implementation Strategies
- Implementation Schedule

**Date: September 6, 2012**

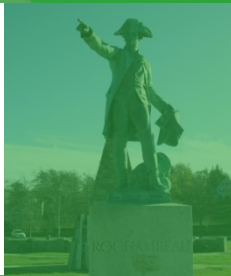
**Time: 3:00 PM**

**Location: Council Chambers**



NEWPORT  
RHODE ISLAND

1639



# DISCUSSION