

# NEWPORT CSO Program Newsletter



NEWPORT  
RHODE ISLAND  
1639

Vol. II No. 1

Spring 2012

## CSO Program Goals

Continue to identify & implement the most cost-effective solution for reducing the number of CSOs to a level protective of Newport Harbor and acceptable to the community and regulatory agencies.



Thames Street Interceptor Rehabilitation Project

## Recent CSO Program Accomplishments

- Completed 11 months of stormwater infiltration and inflow (I/I) field work investigations
- Submitted 2 reports to EPA on the progress and findings of the stormwater I/I field work
- Completed numerous planned equipment upgrades at the WPCP
- Completed a rain barrel distribution pilot program

## CSO Program Consent Decree

At the July 27, 2011 Council Meeting, the City Council approved the CSO consent decree. The Consent Decree was developed over the previous two years of negotiations between the City, EPA, RIDEM and the citizen plaintiffs. The Consent Decree defines the schedule of activities that the City must follow in order to reduce CSOs to Newport Harbor.

## In This Issue:



- 1 Recent CSO Program Accomplishments
- 2 CSO Program Consent Decree
- 3 Newport Harbor Water Quality Monitoring Program
- 4 Newport Harbor Water Quality Monitoring Results
- 5 What You Can Do to Help Protect Newport Harbor
- 6 Key Terms and Acronyms
- 7 CSO Program Stakeholder Workgroup
- 8 Contact Information

## Special Offer



Sponsored by  
City of Newport  
Water Pollution Control Division  
**City of Newport  
Residents and Businesses  
are offered  
one FREE Rain Barrel**

Quantities are limited and will be offered on a first come, first serve basis so call the number below to reserve yours today.  
Additional barrels may be purchased for a discounted rate of \$65 at [www.rivaterlady.com](http://www.rivaterlady.com)

To reserve your barrel, call (401) 845-5600.  
Pick-up date is Saturday April 28, 2012  
9 am - 12 noon  
at the Newport Department of Utilities  
70 Halsey Street.

# Newport Harbor Water Quality Monitoring Program

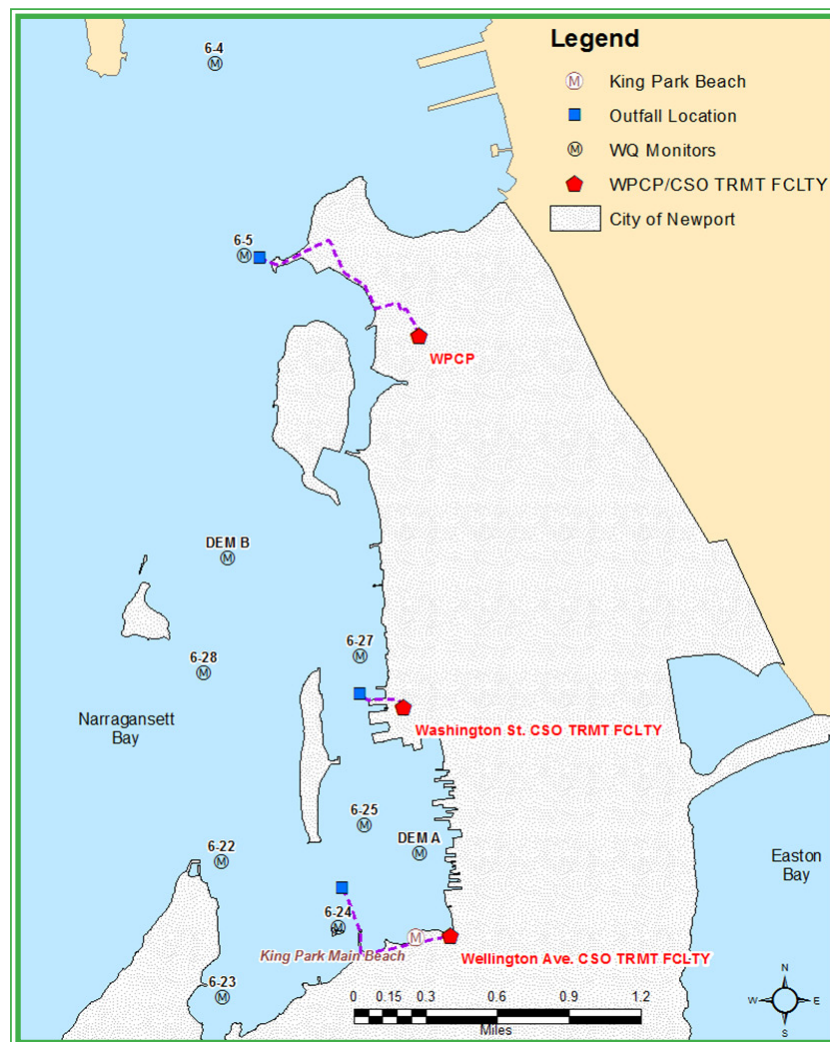
In conjunction with RIDEM, the City of Newport has been sampling the water quality in Newport Harbor on a weekly basis since October 2008. The City collects samples at 10 locations within Newport Harbor and tests the water for Fecal Coliform, Enterococci, Biochemical Oxygen Demand, Total Suspended Solids, Total Kjeldahl Nitrogen (TKN), temperature, pH, and salinity. Of these indicators, Enterococci is the primary factor used to characterize overall water quality health. The locations sampled by the City are shown in the figure on this page.

The purpose of the water quality monitoring program is to determine if the water quality in Newport Harbor meets the state standards for its waterbody classification. The State of Rhode Island classifies the waters of Newport Harbor as follows:

*SB = These waters are designated for primary and secondary contact recreational activities; shellfish harvesting for controlled relay and depuration; and fish and wildlife habitat. They shall be suitable for aquacultural uses, navigation, and industrial cooling. These waters shall have good aesthetic value.*

*SBI = These waters are designated for primary and secondary contact recreational activities and fish and wildlife habitat. They shall be suitable for aquacultural uses, navigation, and industrial cooling. These waters shall have good aesthetic value. Primary contact recreational activities may be impacted due to pathogens from approved wastewater discharges. However all Class SB criteria must be met.*

For more information about the State of Rhode Island's waterbody classification standards please visit: <http://www.dem.ri.gov/pubs/regs/regs/water/h20q09a.pdf>



City of Newport Water Quality Sampling Locations

## Newport Harbor Water Quality Monitoring Results

The results of almost 3 years worth of sampling from October 2008 – July 2011 shows that from almost 1500 samples, only 25 exceeded the state standard of 104 CFU (Colony Forming Units) for Enterococci, the primary indicator of waterbody health. In addition, less than half of these exceedences occurred around the time of a CSO discharge event as shown in the table below. *The primary finding of over 3 years of sampling is that water quality in Newport Harbor is excellent!*

For more detailed, station by station results, please visit the City’s webpage: [http://www.cityofnewport.com/departments/utilities/pollution\\_control/harbor.cfm](http://www.cityofnewport.com/departments/utilities/pollution_control/harbor.cfm)

While the data collected, indicates that CSOs may contribute some amount to the few Enterococci exceedences in Newport Harbor, there must also be other sources contributing. These other sources may be:

- Stormwater runoff
- Wildlife contributors
- Illegal boat waste dumping

## What You Can Do to Help Protect Newport Harbor

- Disconnect sources of I/I from your private property that contribute to CSOs (for more information about the City’s Building Inspection Program to identify & remove sources of I/I, please visit the City’s webpage: [http://www.cityofnewport.com/departments/utilities/pollution\\_control/bip.cfm](http://www.cityofnewport.com/departments/utilities/pollution_control/bip.cfm))
- Clean up after your pets – the City supports these efforts through its Mutt Mitt Program with 44 locations across the City that offer free disposable pick up mitts for pet waste. More information can be found at: <http://www.cityofnewport.com/departments/public-services/grounds.cfm>
- Use approved boat pump outs for boat waste
- Don’t dispose of materials to catch basins (for example: motor oil, lawn fertilizers, paints, etc.)
- Don’t over use lawn fertilizers. Follow manufacturer instructions so that excess doesn’t wash off to catch basins and Newport Harbor.



Year	Total Samples Collected	Total Enterococci Exceedences+	Enterococci Exceedences Associated with Rainfall (but No CSO Event)	Enterococci Exceedences within 2 days of a CSO Event	Enterococci Exceedences Preceded by 24+ hrs of Dry Weather
2008*	130	9	0	6	3
2009	530	4	1	1	2
2010	520	10	4	5	1
2011	520	8	2	6	0
<b>Total</b>	<b>1700</b>	<b>31</b>	<b>7</b>	<b>18</b>	<b>6</b>

\* 2008 is a partial year.

+ Enterococci was not exceeded at all 10 locations. For 11 of 16 days, Enterococci was exceeded at only 1 station.

# CSO Program Stakeholder Workgroup

The CSO Program Stakeholder Workgroup has held its first five meetings. The schedule below shows the planned frequency and topics for future meetings. The next meeting is scheduled for Thursday, May 3, 2012 in the Council Chambers at Newport City Hall at 3:00 PM. These meetings are open for any interested party to attend to learn more about the CSO Program.

## Key Meeting Topics

Key topics for the May 3 Stakeholder meeting are

- Collection System Capacity Assessment Results
- System Behaviors and SMP Control Technologies

The CSO Stakeholder materials web address is:  
[http://www.cityofnewport.com/departments/utilities/pollution\\_control/stakeholders.cfm](http://www.cityofnewport.com/departments/utilities/pollution_control/stakeholders.cfm)

	2011												2012											
	J	F	M	A	M	J	J	A	S	O	N	D	J	F	M	A	M	J	J	A	S	O	N	D
Meeting #1 - Overview		■																						
CSO System Tours			■																					
Meeting #2 - Metering & Extraneous Flow Investigations				■																				
Meeting #3 - GIS, CMOM & WPCP							■																	
Meeting #4 - Harbor Water Quality								■																
Meeting #5 - Financing & Rates											■													
Meeting #6 - Alternatives Evaluation Process														■										
Meeting #6a - Alternatives Evaluation Process cont.															■									
Meeting #6b - Alternatives Evaluation Process cont.																■								
Meeting #7 - Draft Collection System Capacity Assessment & SMP																							■	
Meeting #8 - Updated SMP																							■	
SMP - Final to EPA																								⚓

## Key Terms & Acronyms

**Colony Forming Unit (CFU)** - an analytical unit of measure for bacteria

**Combined Sewer System** – a system of pipes designed to capture both sanitary sewer flow as well as stormwater from rainfall events.

**Combined Sewer Overflow (CSO)** – the discharge of wastewater and stormwater from a combined sewer system directly to a receiving waterbody during wet weather.

**Environmental Protection Agency (EPA)** – federal agency that oversees regulations relating

to sanitary sewer systems, combined sewer systems, CSOs and receiving waters.

**Infiltration/Inflow (I/I)** - the total quantity of water from both Infiltration and Inflow without distinguishing the source

**Rhode Island Department of Environmental Management (RIDEM)** – state agency that oversees regulations relating to sanitary sewer systems, combined sewer systems, CSOs and receiving waters.

### CONTACT:

Comments, suggestions and feedback can be provided at any time to the Department of Utilities at 401-845-5600 or by e-mail to [NewportCSOProgram@cityofnewport.com](mailto:NewportCSOProgram@cityofnewport.com).