



City of Newport
Department of Utilities

PRESS RELEASE

For Immediate Release

DATE: *November 21, 2018*
CONTACT: *Giovanni Amato, Water Pollution Control Engineer*
TELEPHONE: *(401) 845-5600*
FAX: *(401) 846-0947*

NOTICE

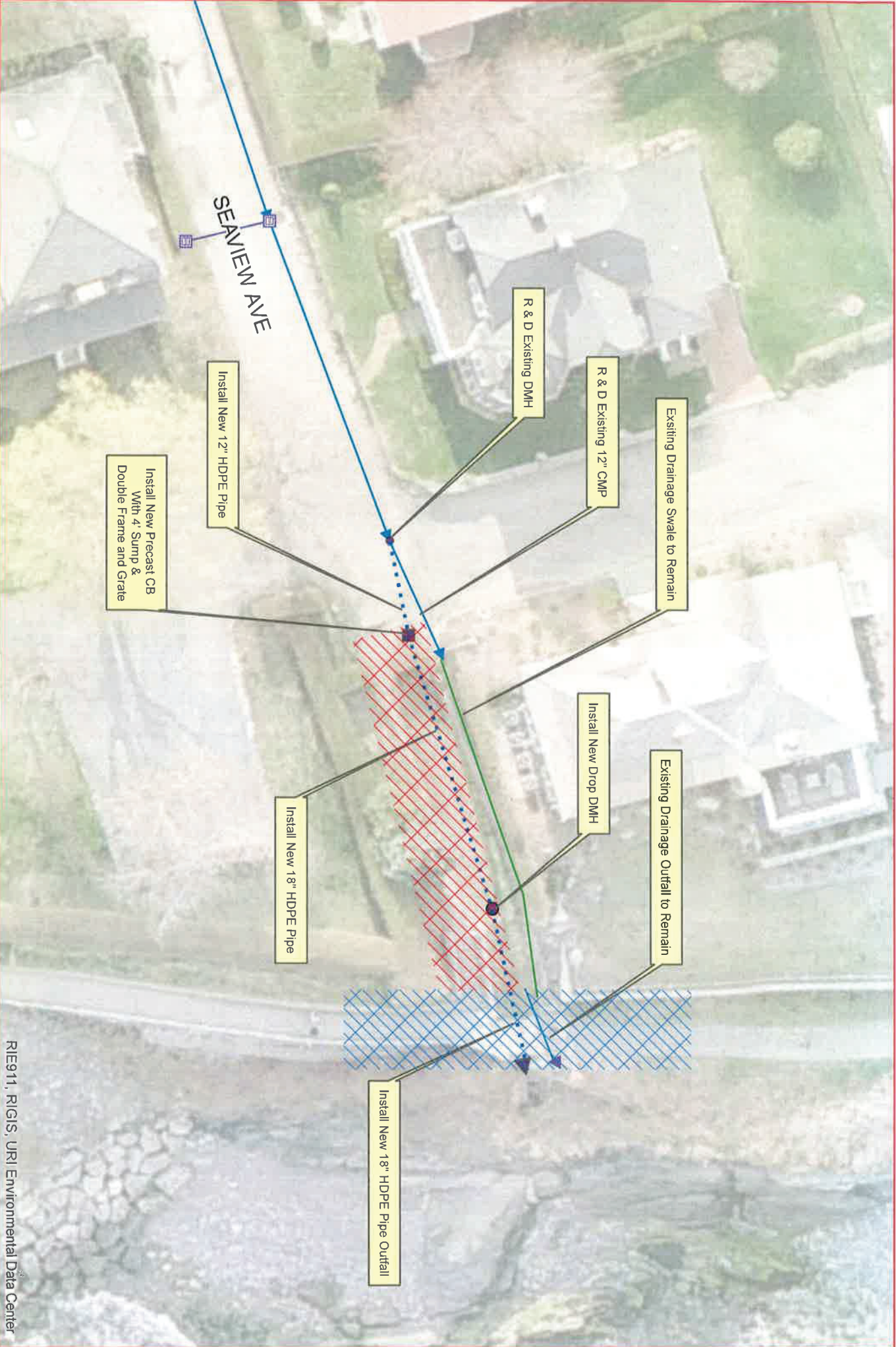
Cliff Walk and Seaview Ave. - Storm Drainage Improvements

The City of Newport will close a small section of the Cliff Walk for approximately one week in the vicinity of Seaview Avenue. The City anticipates approximately 100 feet of the Cliff Walk at Seaview Avenue being closed as WPC crews perform drainage improvements and install a new concrete walking. In addition to the section of the Cliff Walk closure, the access to the Cliff Walk at Seaview Ave. will be closed for four (4) weeks during the improvements.

The Department of Utilities Water Pollution Control Division (WPC) will begin work on Tuesday, November 27, 2018, on the Cliff Walk adjacent to Seaview Avenue. This section of the Cliff Walk will be closed 24-hours a day starting Tuesday, November 27, 2018, at 7:00 am through November 30, 2018 at 4 pm.

The access to the Cliff Walk from Seaview Avenue will be closed 24-hours a day starting Tuesday, November 27, 2018, at 7:00 am through December 21, 2018 at 4 pm.

Pedestrians will be allowed to utilize Narragansett Avenue and Memorial Boulevard for access to the Cliff Walk. With the exception of the work area at Seaview Avenue, the Cliff Walk will remain open and may be accessed directly from Memorial Boulevard and Narragansett Avenue.



RIE911, RIGIS, URI Environmental Data Center



SEAVIEW AVENUE DRAINAGE IMPROVEMENTS NEWPORT, RHODE ISLAND



-  Cliff Walk Closed November 27 thru 30, 2018
-  Seaview Ave Cliff Walk Access Closed November 27 thru December 21, 2018