

16 BRINLEY STREET
NEWPORT, RI, 02840

HISTORIC DISTRICT
APPLICATION
REVISED AS BUILT
2/10/2021

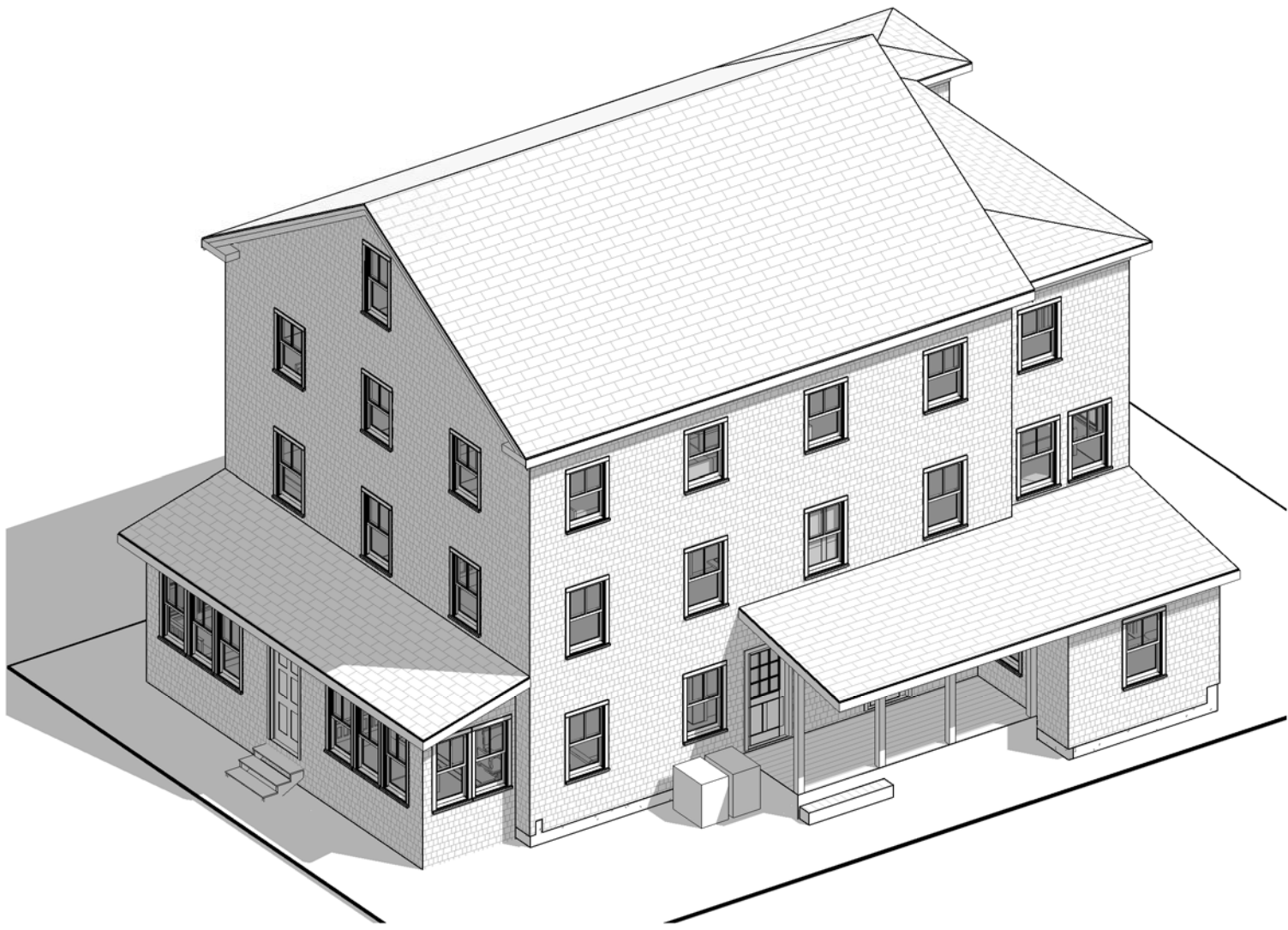
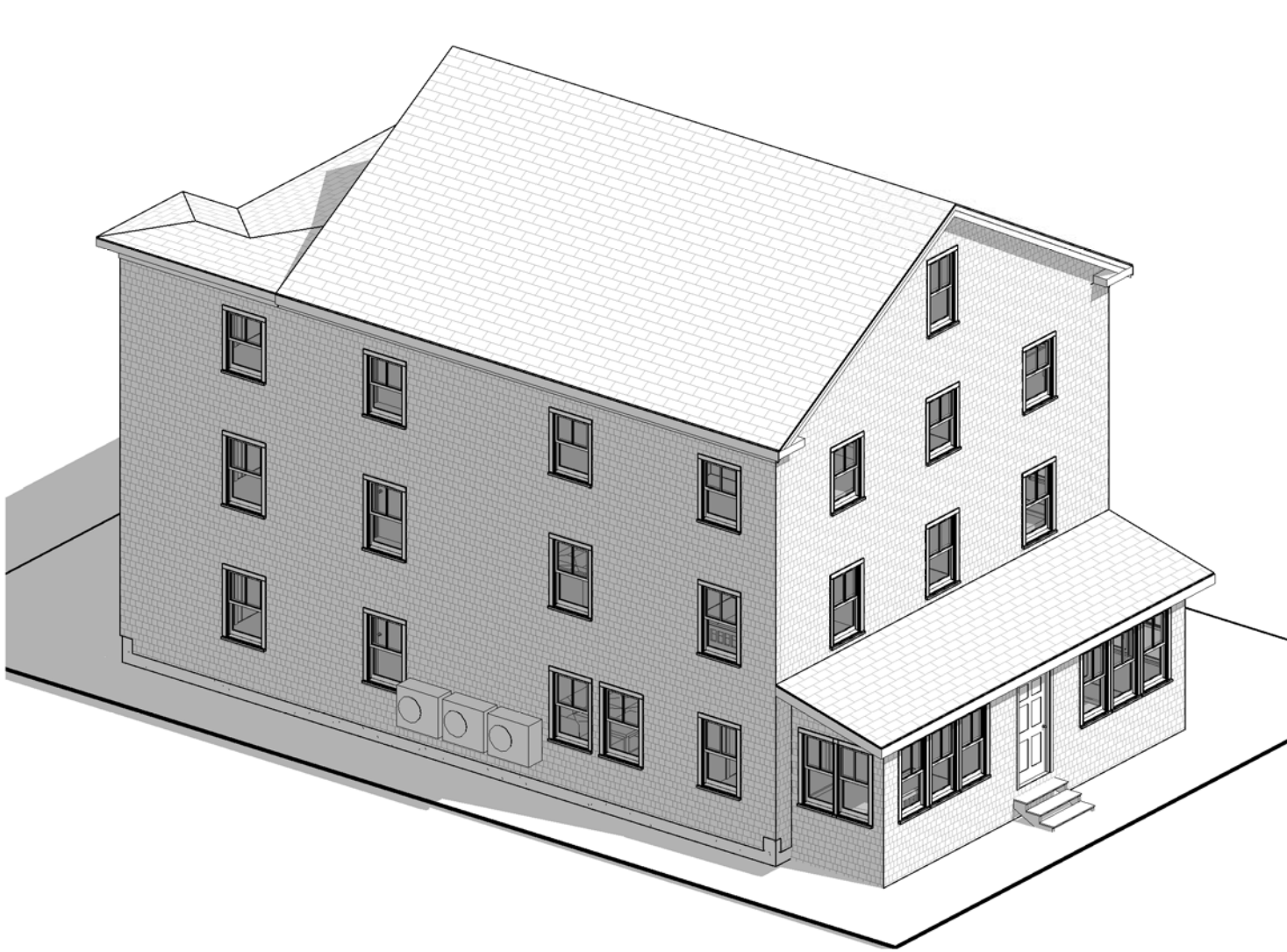


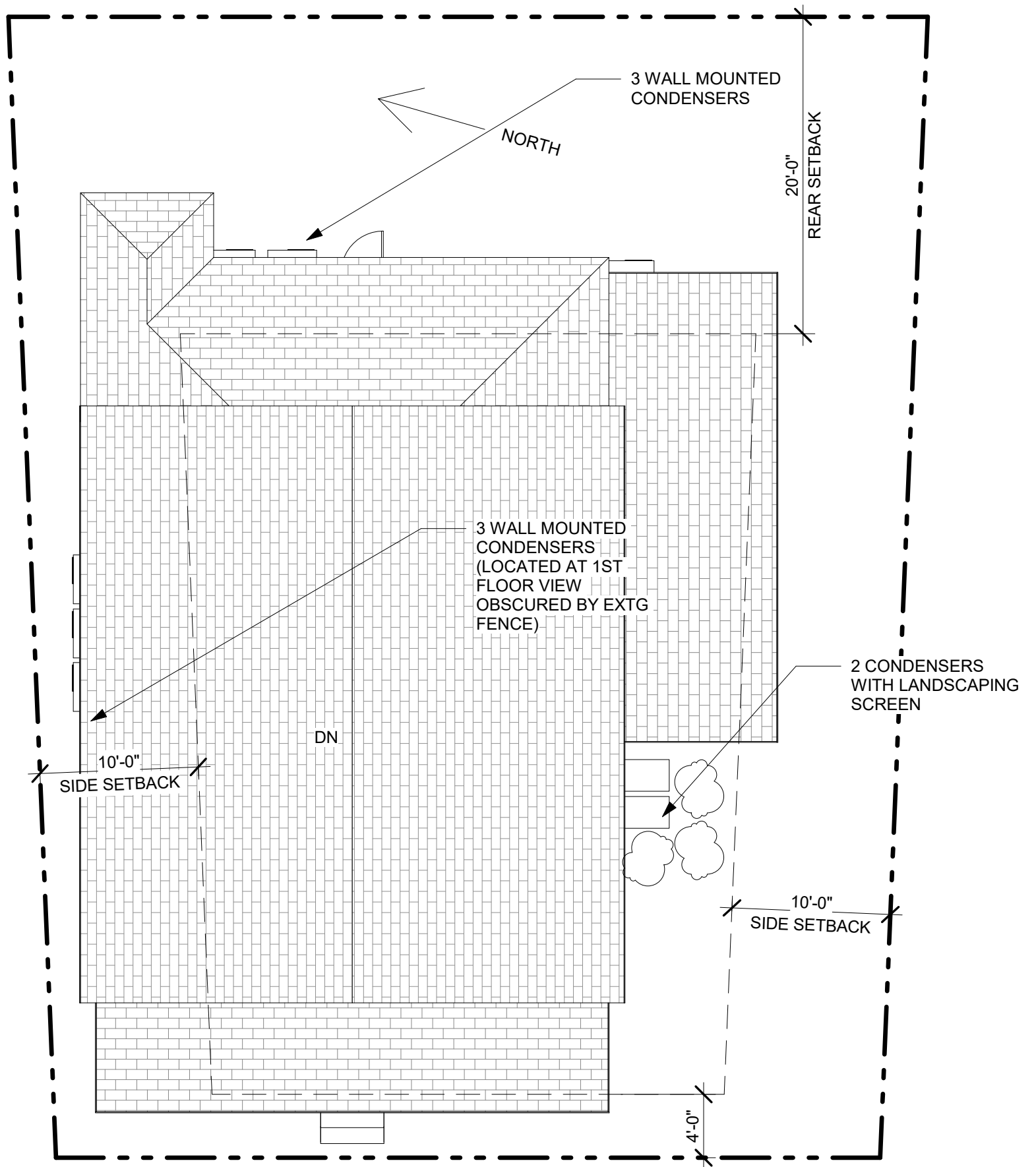
HERK WORKS

ARCHITECTURE

401.662.7875

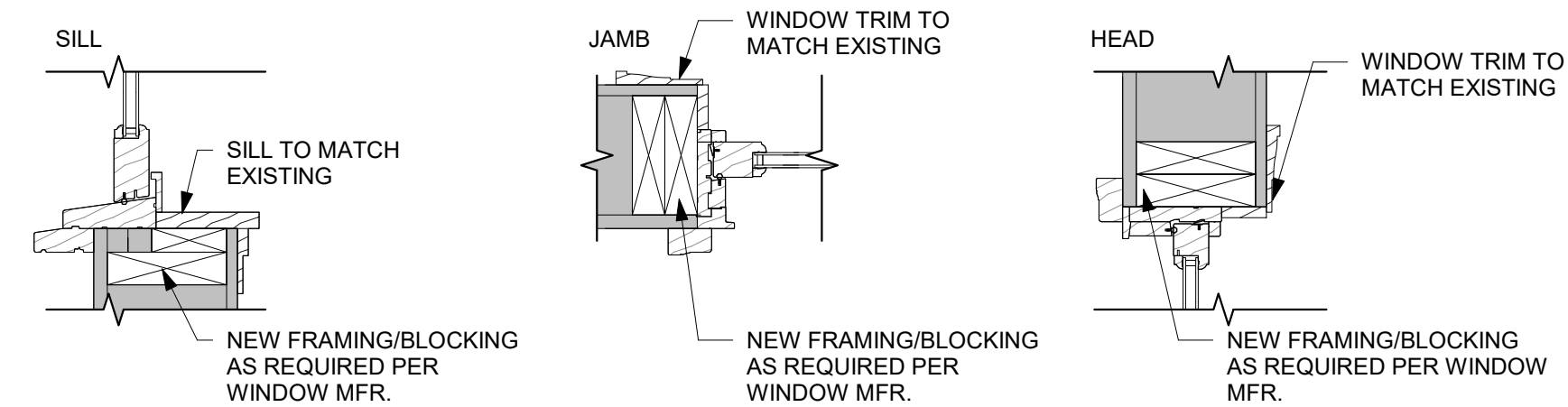
DAN@HERK-WORKS.COM



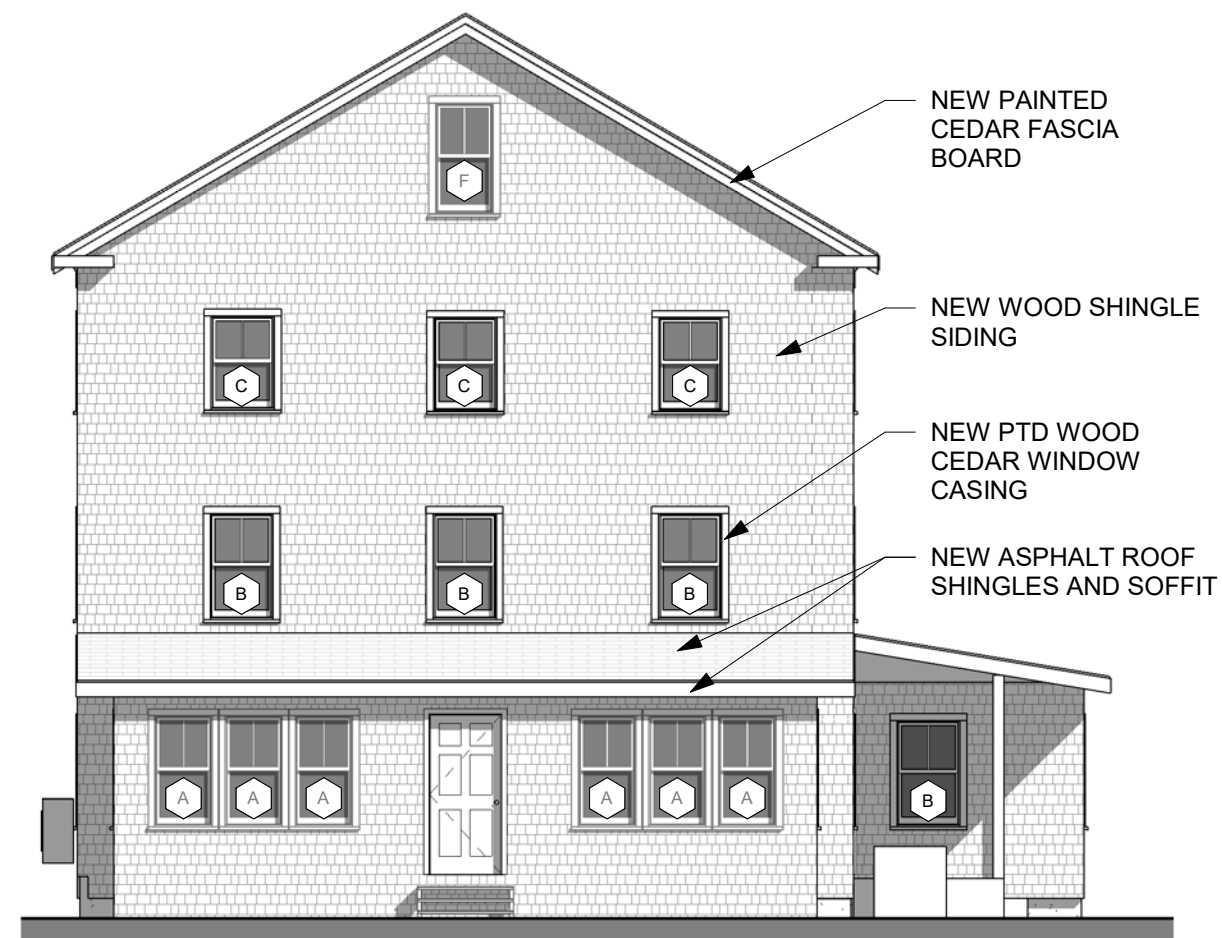


① SITE PLAN
1/8" = 1'-0"

DOUBLE HUNG DETAILS



Window Schedule					
Type Mark	Count	Width	Height	Description	Type Comments
A	11	2' - 6"	4' - 8"	DOUBLEHUNG	EXISTING TO REMAIN
B	24	2' - 9"	4' - 5 1/2"	DOUBLEHUNG	
C	22	2' - 9"	3' - 11 1/2"	DOUBLEHUNG	
D	2	2' - 7"	3' - 5 1/2"	DOUBLEHUNG	EXISTING TO REMAIN
E	4	2' - 5"	4' - 5 1/2"	DOUBLEHUNG	
F	1	2' - 6"	4' - 8"	DOUBLEHUNG	EXISTING TO REMAIN



1 FRONT ELEVATION (WEST) - PROPOSED
1/8" = 1'-0"



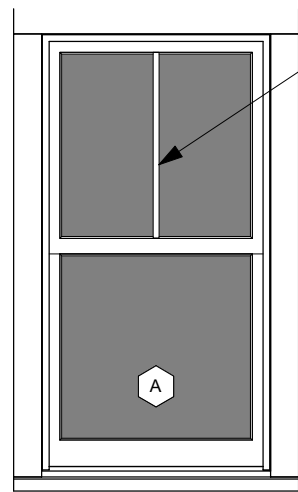
3 FRONT ELEVATION (WEST) - EXISTING
1/8" = 1'-0"



EXISTING 4TH FLOOR WINDOW 'TYPE E'

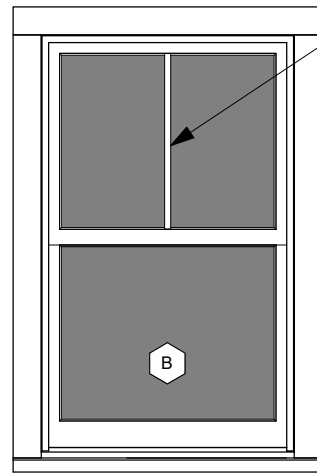


EXISTING WINDOWS 'TYPE A'



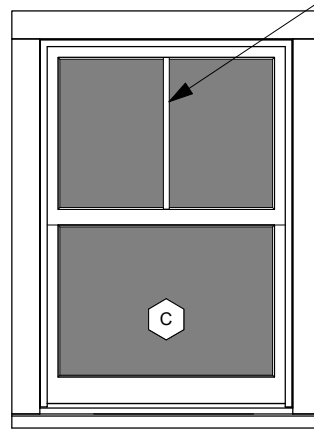
SIMULATED
DIVIDED
LITES

EXISTING TO REMAIN
ROUGH OPENING: 2'-6" x 4'-8"



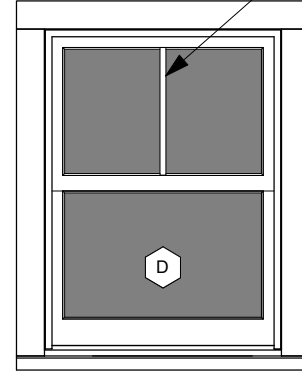
SIMULATED
DIVIDED
LITES

MARVIN ULTIMATE WOOD
DOUBLE HUNG WINDOW
MODEL UWDH2822
ROUGH OPENING: 2'-10 3/8" x 4'-5 1/2"
FRAME SIZE: 2'-9 3/8" x 4'-5"



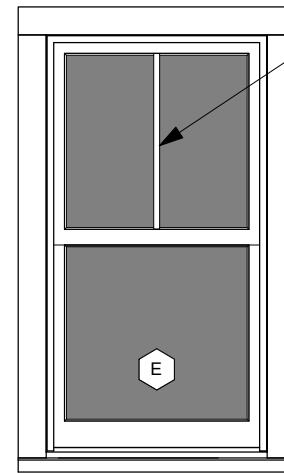
SIMULATED
DIVIDED
LITES

MARVIN ULTIMATE WOOD
DOUBLE HUNG WINDOW
MODEL UWDH2820
ROUGH OPENING: 2'-10 3/8" x 4'-1 1/2"
FRAME SIZE: 2'-9 3/8" x 4'-1"



SIMULATED
DIVIDED
LITES

REPLACE EXTG VINYL
WINDOW
FRAME SIZE: 2'-7" x 3'-5 1/2"



SIMULATED
DIVIDED
LITES

MARVIN ULTIMATE WOOD
DOUBLE HUNG WINDOW
MODEL UWDH2422
ROUGH OPENING: 2'-6 3/8" x 4'-5 1/2"
FRAME SIZE: 2'-5 3/8" x 4'-5"



EXISTING STORM WINDOW
(SOUTH)

1 WINDOW ELEVATIONS 1/2" = 1'-0"



2 SIDE ELEVATION (SOUTH) - PROPOSED 1/8" = 1'-0"

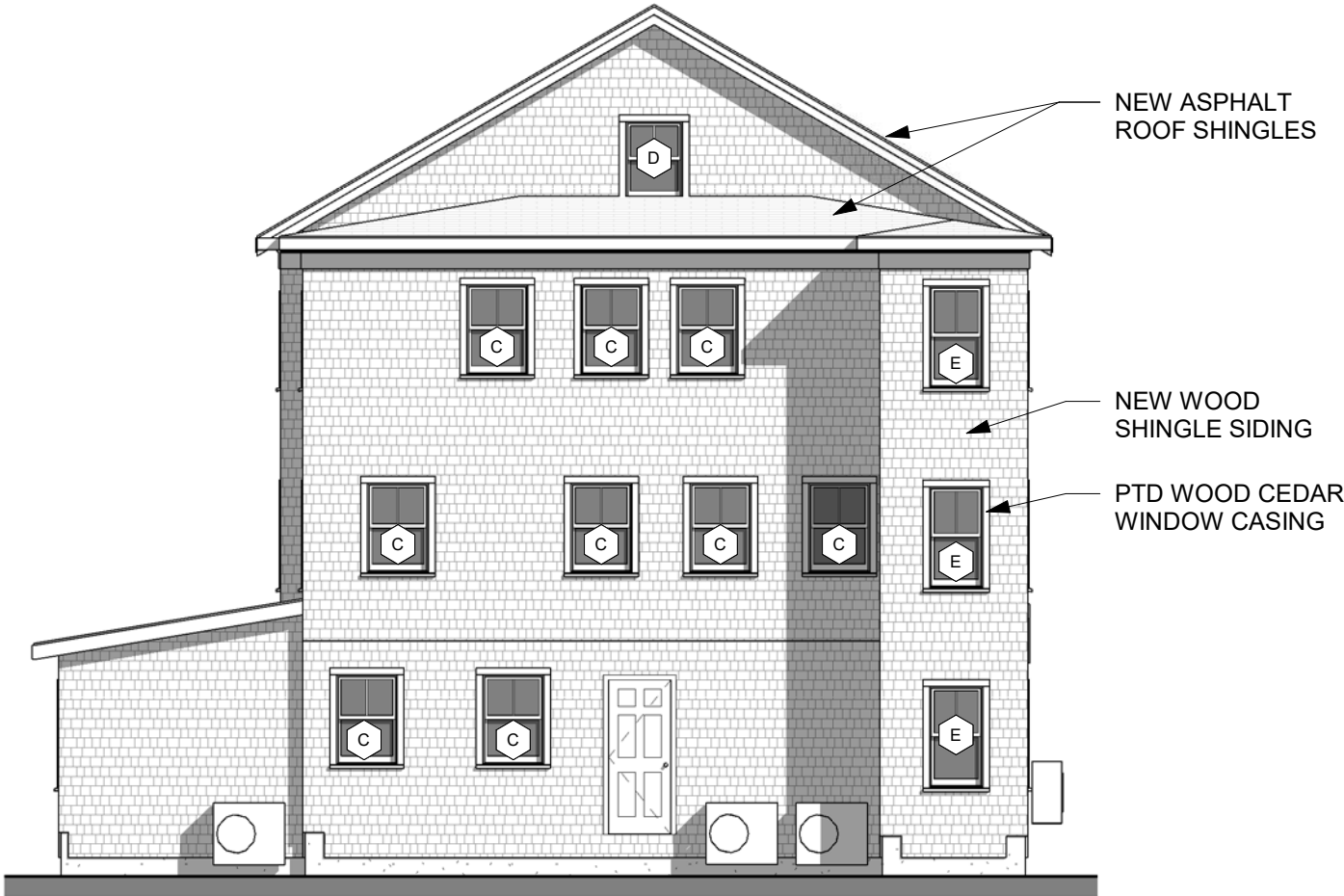


3 SIDE ELEVATION (SOUTH) - EXISTING 1/8" = 1'-0"

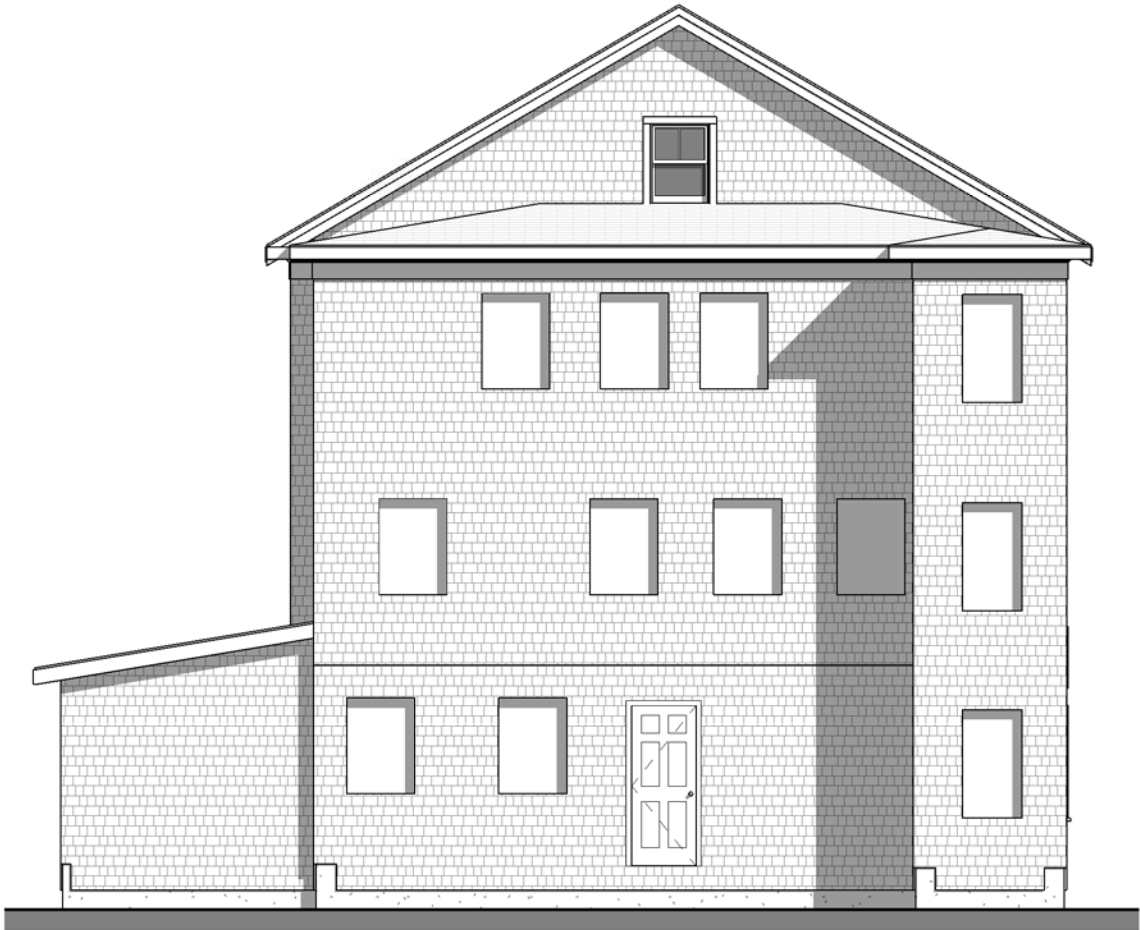


EXISTING VINYL WINDOW 'TYPE D'

Window Schedule					
Type Mark	Count	Width	Height	Description	Type Comments
A	11	2' - 6"	4' - 8"	DOUBLEHUNG	EXISTING TO REMAIN
B	24	2' - 9"	4' - 5 1/2"	DOUBLEHUNG	
C	22	2' - 9"	3' - 11 1/2"	DOUBLEHUNG	
D	2	2' - 7"	3' - 5 1/2"	DOUBLEHUNG	EXISTING TO REMAIN
E	4	2' - 5"	4' - 5 1/2"	DOUBLEHUNG	
F	1	2' - 6"	4' - 8"	DOUBLEHUNG	EXISTING TO REMAIN



2 REAR ELEVATION (EAST) - PROPOSED
1/8" = 1'-0"



1 REAR ELEVATION (EAST) - EXISTING
1/8" = 1'-0"



EXISTING STORM WINDOW
(NORTH)

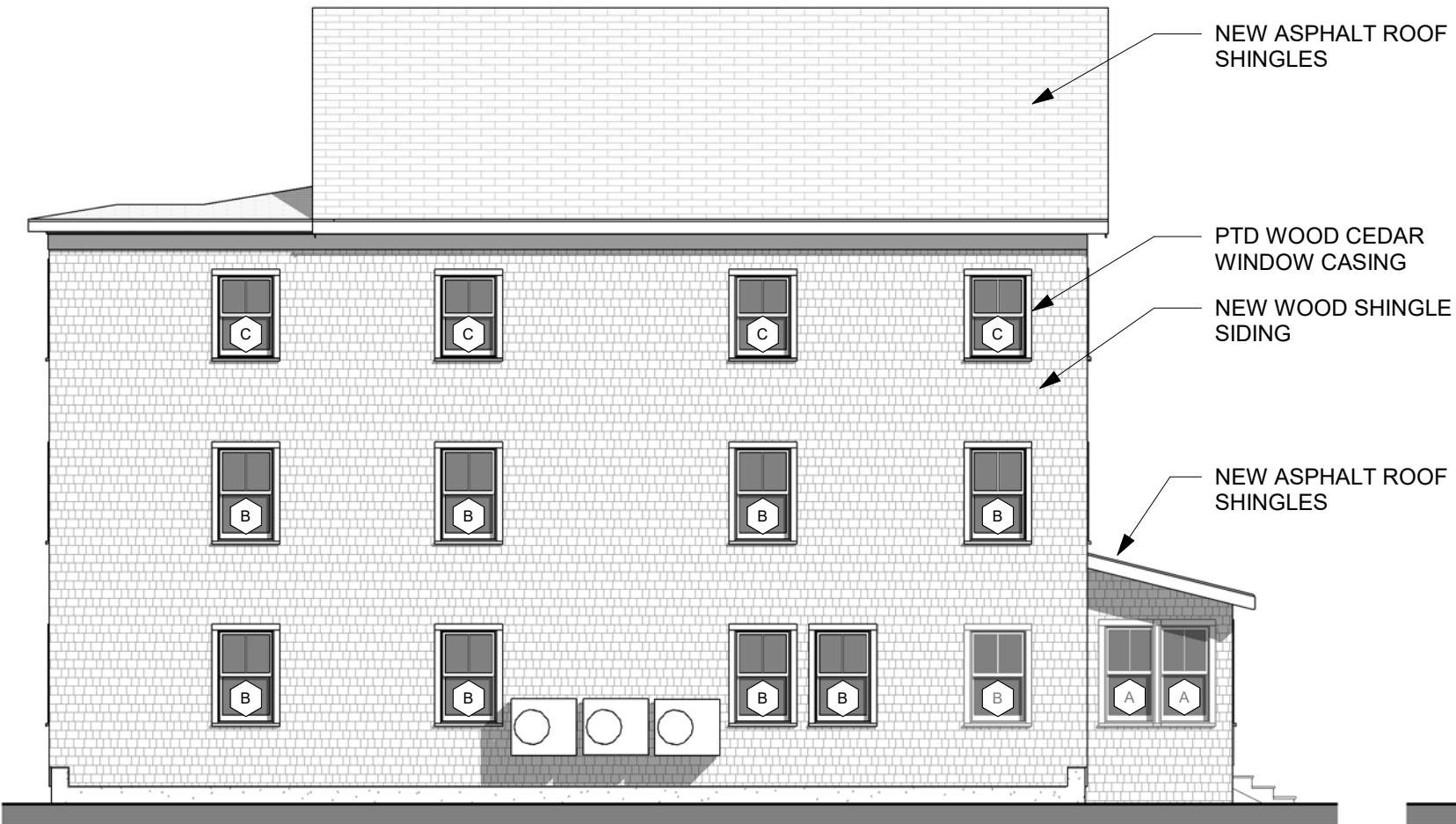


EXISTING WINDOW 'TYPE B'

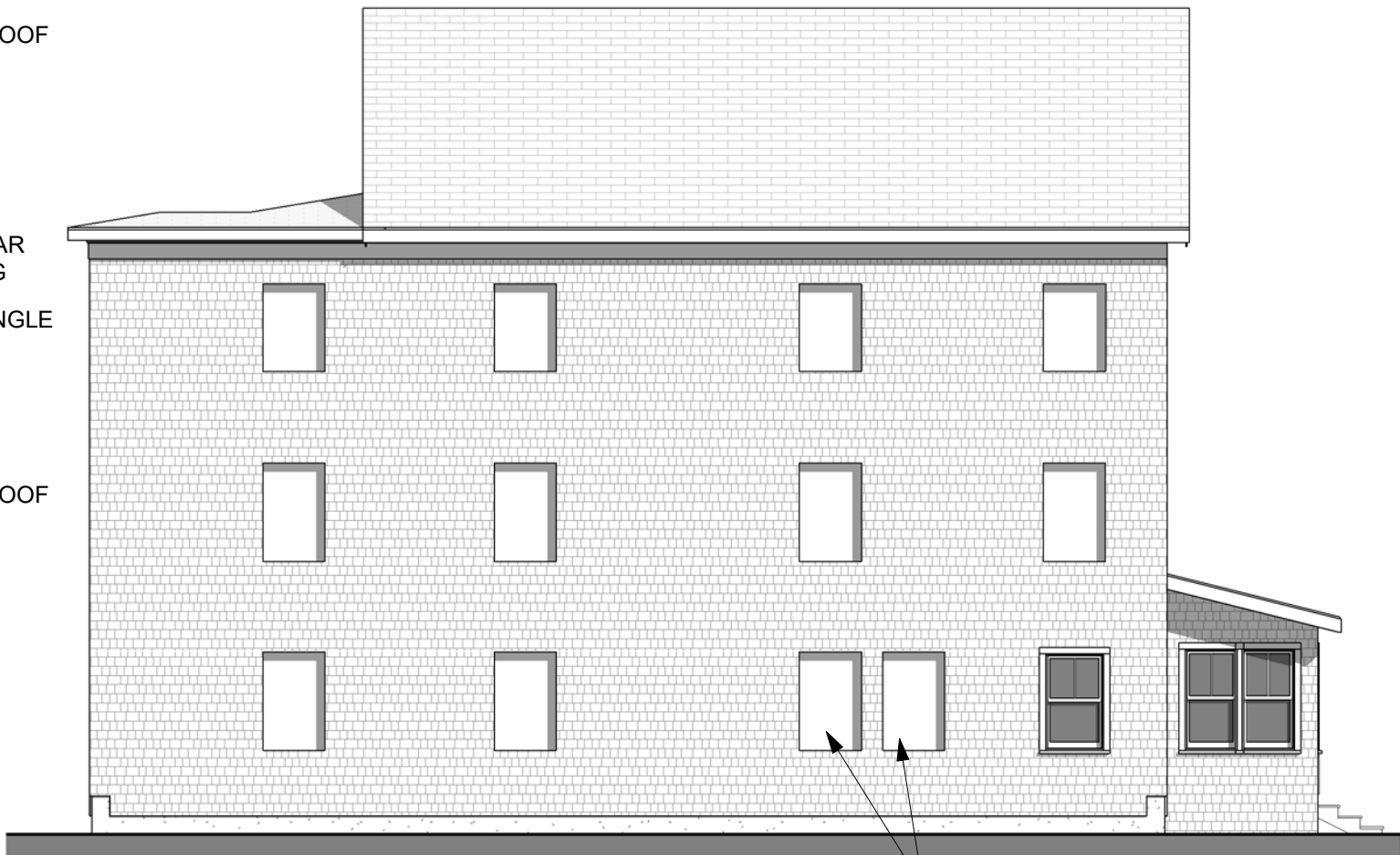


EXISTING WINDOW 'TYPE B'

Window Schedule					
Type Mark	Count	Width	Height	Description	Type Comments
A	11	2' - 6"	4' - 8"	DOUBLEHUNG	EXISTING TO REMAIN
B	24	2' - 9"	4' - 5 1/2"	DOUBLEHUNG	
C	22	2' - 9"	3' - 11 1/2"	DOUBLEHUNG	
D	2	2' - 7"	3' - 5 1/2"	DOUBLEHUNG	EXISTING TO REMAIN
E	4	2' - 5"	4' - 5 1/2"	DOUBLEHUNG	
F	1	2' - 6"	4' - 8"	DOUBLEHUNG	EXISTING TO REMAIN



2 SIDE ELEVATION (NORTH) - PROPOSED
1/8" = 1'-0"



1 SIDE ELEVATION (NORTH) - EXISTING
1/8" = 1'-0"

